



SonicWALL

# TZ Series

Unified Threat Management firewall

The Dell™ SonicWALL™ TZ Series is the most secure Unified Threat Management (UTM) firewall for small businesses, retail deployments, remote sites, branch offices and distributed enterprises. Unlike consumer-grade products, the TZ Series delivers the most effective anti-malware, intrusion prevention, content/URL filtering and application control capabilities along with the broadest most secure mobile platform support for laptops, smartphones and tablets. It provides full deep packet inspection (DPI) at very high performance levels, eliminating the network bottleneck that other products introduce, and enabling organizations to realize increased productivity gains. The TZ Series is the most secure, sophisticated and widely-deployed security platform on the market today.

Additionally, the Dell SonicWALL Application Intelligence and Control capabilities in the TZ 215 ensures that bandwidth is available for business-critical applications while throttling or blocking unproductive applications. The TZ 215 also offers advanced application traffic analytics and reporting for deep insight into bandwidth utilization and security threats.

The TZ Series includes additional advanced networking features such as IPSec and SSL VPN, multiple ISP failover, load balancing, optional integrated 802.11n wireless and network segmentation, and also enables PCI compliance. The TZ Series is the only available UTM firewall that provides native VPN remote access client for

Apple® iOS, Google® Android™, Windows, Mac OS and Linux. This unique client also supports Clean VPN™, which decontaminates threats from VPN traffic. Providing the most secure support for mobile platforms, only Dell SonicWALL delivers full malware scanning of SSL encrypted traffic and application control for Android and iOS devices.

The new TZ Series is an elegant integration of multiple point products, combined into a single solution providing value while reducing complexity.

## About Dell SonicWALL

Dell SonicWALL develops advanced intelligent network security and data protection solutions that adapt as organizations and threats evolve. Dell SonicWALL designs award-winning hardware, software and virtual-appliance solutions to detect and control applications and protect networks from intrusions and malware attacks. Dell SonicWALL is trusted by small businesses and large enterprises worldwide. Since 1991, it has shipped over two million appliances through its global network of channel partners to keep tens of millions of business computer users safe and in control of their data.

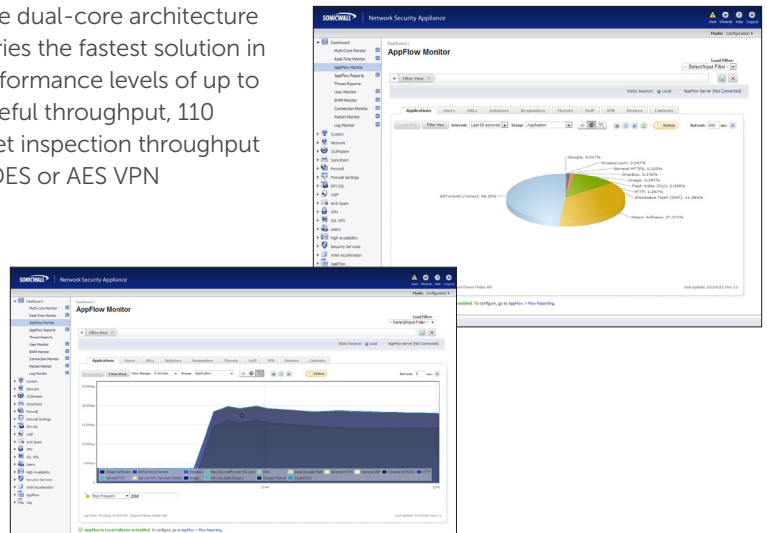


- Built on the proven security architecture of SonicOS, the TZ Series provides **highly effective anti-malware and intrusion prevention** to keep networks safe from sophisticated modern threats.
- **Highly secure SSL VPN remote access** is available natively for Apple iOS, Google Android, Windows, Mac OS and Linux based devices to unleash the potential of a mobile workforce.
- Dell SonicWALL content and URL filtering **blocks multiple categories of objectionable web content** to enable high workplace productivity and reduce legal liability.
- Easy to comprehend and quick to deploy, the graphical user interface in the TZ Series **eliminates the choice between ease-of-use and power**, driving down total cost of ownership.

## Dell SonicWALL architecture

The Dell SonicWALL TZ 205 and TZ 215 feature dual-core Cavium CPUs, which process parallel data streams simultaneously, increasing overall protection and performance. Dual-core technology offers superior performance, scalability, and energy efficiency when compared with network security platforms based on general-purpose processors with separate security co-processors, or Application-Specific Integrated Circuits (ASIC), which can't keep up with evolving complex attacks in real time from both inside and outside the network perimeter. The advanced

high performance dual-core architecture makes the TZ Series the fastest solution in its class, with performance levels of up to 500 Mbps of stateful throughput, 110 Mbps deep packet inspection throughput and 130 Mbps 3DES or AES VPN throughput.



## SonicOS software

Dell SonicWALL's patented\* Reassembly-Free Deep Packet Inspection® (RFDPI) technology enables simultaneous, multi-threat and application scanning and analysis of unlimited files sizes and connections at extremely high speeds. This single code base is at the core of every Dell SonicWALL firewall, from the TZ 105 to the Dell SonicWALL SuperMassive E10800. SuperMassive E10800 with SonicOS is the highest overall protection

\*U.S. Patents 7,310,815; 7,600,257; 7,738,380; 7,835,361; 7,991,723

Next-Generation Firewall to earn the NSS Labs Recommend rating. RFDPI is tightly integrated into the firewall platform, streamlining management of granular firewall policies, directly via the firewall interface or via the Dell SonicWALL Global Management System. Organizations can choose from an entire line of proven Dell SonicWALL firewalls with SonicOS, which massively scale to meet the needs of the highest performance networks.

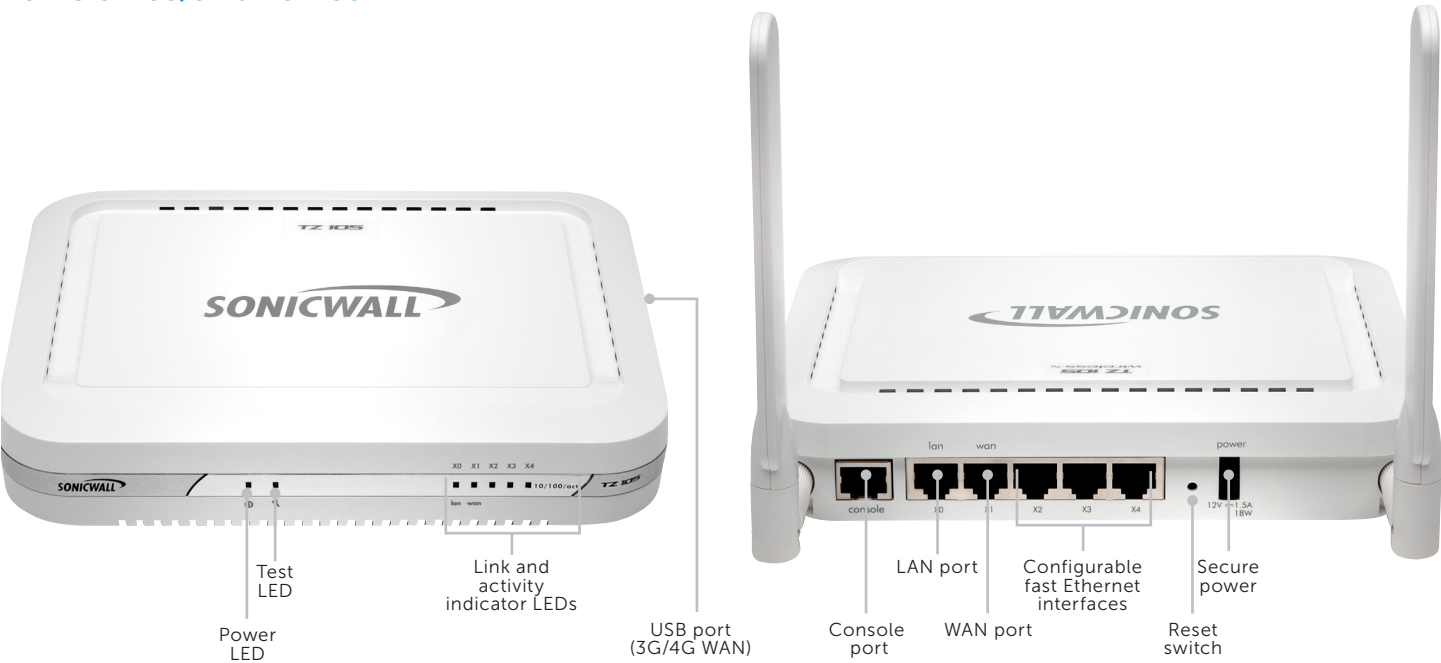


	TZ 105	TZ 205	TZ 215
<b>Firewall overview</b>			
Stateful Packet Inspection Firewall throughput	200 Mbps	500 Mbps	500 Mbps
IPS throughput	60 Mbps	80 Mbps	110 Mbps
GAV throughput	40 Mbps	60 Mbps	70 Mbps
VPN throughput	75 Mbps	100 Mbps	110 Mbps
Full DPI (UTM)	25 Mbps	40 Mbps	60 Mbps
Maximum UTM/DPI connections	8,000	12,000	32,000
Unlimited file size protection	●	●	●
<b>Hardware</b>			
Dual core processor		●	●
Gigabit ethernet		●	●
802.11n support	●	●	●
Dual band 802.11 a/b/g/n support		●	●
<b>Security services</b>			
Intrusion protection*	●	●	●
Gateway Anti-Virus, Anti-Spyware and Cloud AV*	●	●	●
Content and URL Filtering (CFS)*	●	●	●
Enforced Client Anti-Virus and Anti-Spyware*	●	●	●
Application Intelligence and Control*			●

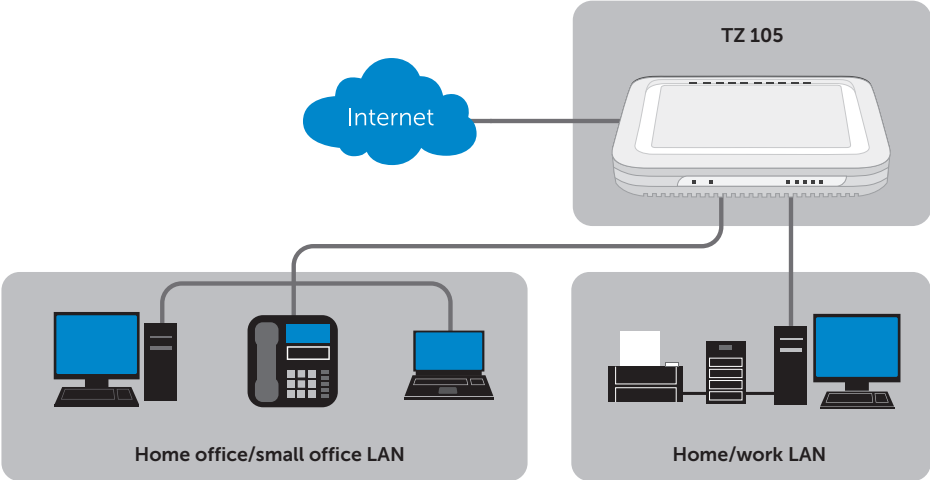
\*Available with subscription service

Dell SonicWALL TZ 105

home office/small office



The new Dell SonicWALL TZ 105 is the most secure Unified Threat Management (UTM) firewall available for small offices, home offices and small retail deployments. Unlike consumer-grade products, the TZ 105 delivers the proven, most effective intrusion prevention, anti-malware and content/URL filtering, along with the broad mobile platform support for laptops, smartphones and tablets. It provides full deep packet inspection (DPI) at very high performance levels, eliminating the network bottleneck that other products introduce, and enabling organizations to realize increased productivity gains without the increased cost.



Hardware description

TZ 105 TotalSecure 1-year

TZ 105 Wireless-N TotalSecure 1-year

01-SSC-4906

01-SSC-4908

Service description

Comprehensive Gateway Security Suite 1-year

Gateway Anti-Virus, Intrusion Prevention and Application Control 1-year

Content/URL Filtering 1-year

Comprehensive Anti-Spam Service 1-year

8x5 Support 1-year

24x7 Support 1-year

01-SSC-4877

01-SSC-4844

01-SSC-4850

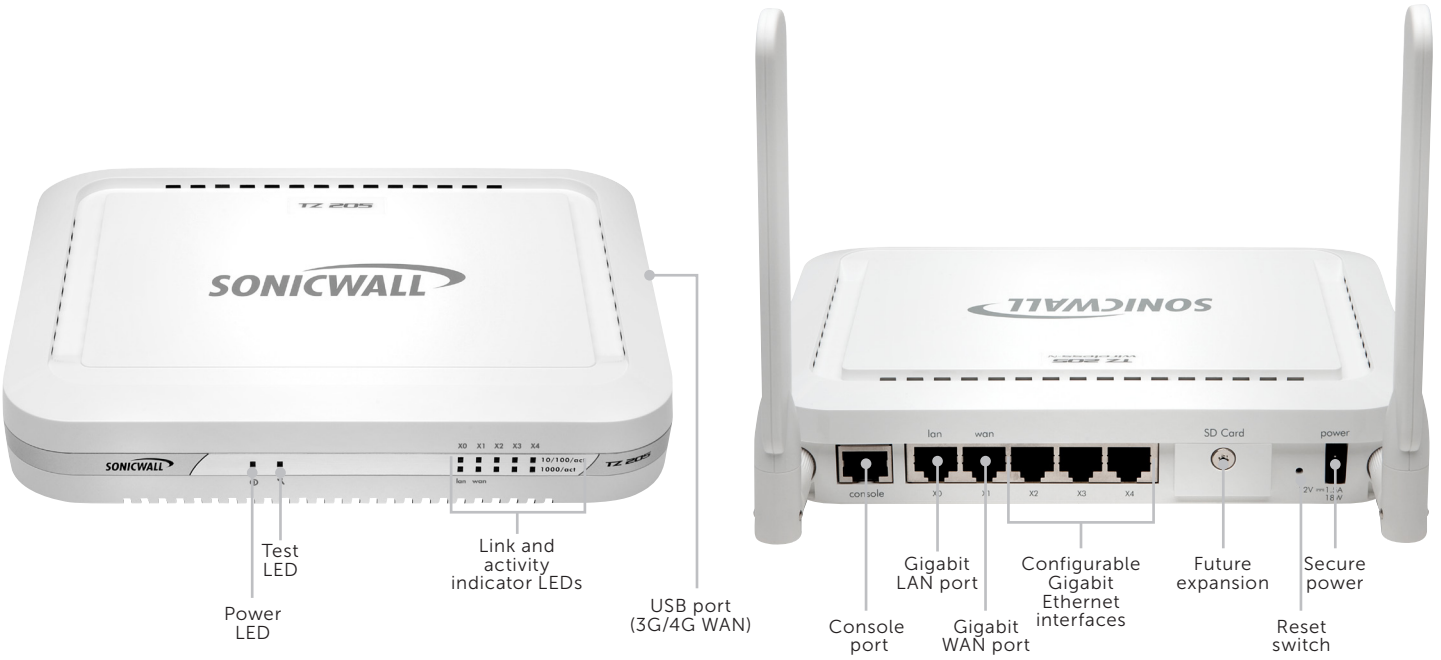
01-SSC-4871

01-SSC-4856

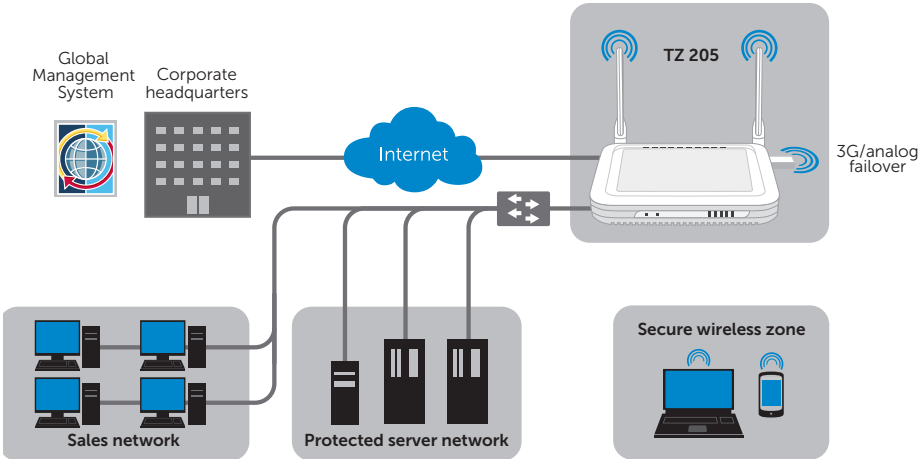
01-SSC-4862

Dell SonicWALL TZ 205

small office/retail



Small businesses, retail deployments, government organizations, remote sites and branch offices can benefit from the powerful security and business-class performance of the new Dell SonicWALL TZ 205. Unlike consumer grade products, this powerful Unified Threat Management (UTM) firewall combines the most effective intrusion prevention, anti-malware and content/URL filtering with the broadest, most secure mobile platform support for laptops, smartphones and tablets. By providing full deep packet inspection (DPI) at very high performance levels, it eliminates the tradeoff between comprehensive security and performance.



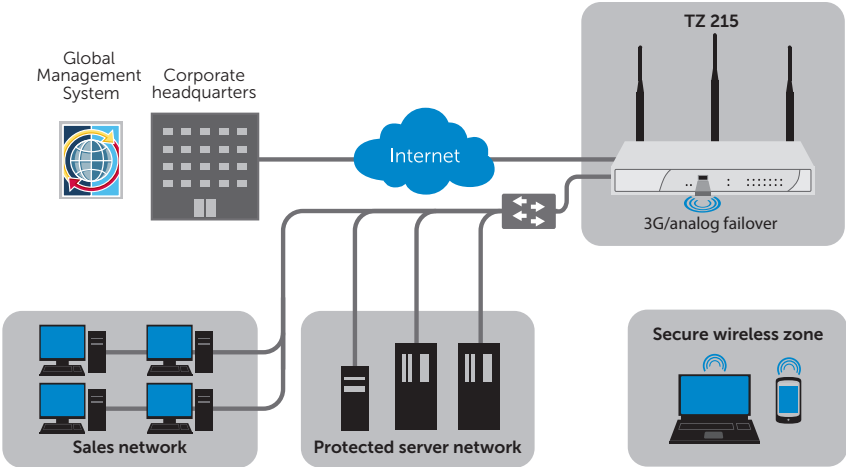
Hardware description	SKU	Service description	SKU
TZ 205	01-SSC-6945	Comprehensive Gateway Security Suite 1-year	01-SSC-4838
TZ 205 Wireless-N	01-SSC-6947	Gateway Anti-Virus, Intrusion Prevention and Application Control 1-year	01-SSC-4799
TZ 205 TotalSecure 1-year	01-SSC-4890	Content/URL Filtering 1-year	01-SSC-4805
TZ 205 Wireless-N TotalSecure 1-year	01-SSC-4892	Comprehensive Anti-Spam Service 1-year	01-SSC-4832
		8x5 support 1-year	01-SSC-4811
		24x7 support 1-year	01-SSC-4817

Dell SonicWALL TZ 215

retail/branch office



The new Dell SonicWALL TZ 215 is the most secure, highest performance Unified Threat Management (UTM) firewall available for small businesses and branch offices. Designed for small businesses, distributed enterprises, branch offices and retail deployments, the TZ 215 integrates anti-malware, intrusion prevention, application control and URL filtering, driving down cost and complexity. It provides a dual-core architecture delivering full deep packet inspection (DPI) without diminishing network performance, thus eliminating bottlenecks that other products introduce, enabling businesses to realize increased productivity gains. The TZ 215 also provides application control to ensure bandwidth for critical applications, while throttling non-productive ones. Advanced networking features include multiple ISP failover and load balancing, optional dual-band secure wireless, IPSec VPN support, network segmentation and PCI compliance capabilities.



Hardware description

TZ 215	01-SSC-4976
TZ 215 Wireless-N	01-SSC-4977
TZ 215 TotalSecure 1-year	01-SSC-4982
TZ 215 Wireless-N TotalSecure 1-year	01-SSC-4984

Service description

Comprehensive Gateway Security Suite 1-year	01-SSC-4793
Gateway Anti-Virus, Intrusion Prevention, and Application Intelligence, Control and Visualization 1-year	01-SSC-4757
Content/URL Filtering 1-year	01-SSC-4763
Comprehensive Anti-Spam Service 1-year	01-SSC-4787
8x5 support 1-year	01-SSC-4769
24x7 support 1-year	01-SSC-4775

## Features

### Intrusion prevention

Feature	Description
Signature-based scanning	Tightly integrated, signature-based intrusion prevention scans packet payloads for vulnerabilities and exploits that target critical internal systems.
Automatic signature updates	Dell SonicWALL's Research Team continuously updates and deploys an extensive list of over 5,400 IPS signatures covering 52 attack categories. These signatures take immediate effect and do not require reboots or any other interruption in service.
Outbound threat prevention	The ability to inspect both inbound and outbound traffic ensures that the network will not unwittingly be used in Distributed Denial of Service attacks and will prevent any Command and Control Botnet communication.
Intra-zone IPS protection	Intrusion prevention can be deployed between internal security zones to protect sensitive servers and to prevent internal attacks.

### VPN

IPSec VPN for site-to-site connectivity	High-performance IPSec VPN allows the firewall to connect remote branch offices to a central location.
SSL VPN or IPSec client remote access	Utilize clientless SSL VPN technology or an easy-to-manage IPSec client for easy access to email, files, computers, intranet sites and applications from a variety of platforms.
Redundant VPN gateway	When using multiple WANs, a primary and secondary VPN can be configured to allow seamless automatic failover and fallback of all VPN sessions.
Route-based VPN	The ability to perform dynamic routing over VPN links ensures continuous uptime in the event of a temporary VPN tunnel failure by seamlessly re-routing traffic between endpoints through alternate routes.
Clean VPN	Dell SonicWALL Clean VPN™ both secures the integrity of VPN access and decontaminates malicious threats before they can enter the corporate network.

### Gateway threat prevention

Gateway anti-malware	Dell SonicWALL's patented RFDPI engine scans all ports and protocols for viruses without file size or stream length limitation. SonicLabs Researchers constantly provide updated threat protection, providing faster response times and threat prevention.
Reassembly-Free Deep Packet (RFDPI)	Reassembly-Free Deep Packet Inspection keeps track of malware regardless of the order or inspection timing with which the packets arrive. This allows for extremely low latency while eliminating file and stream size limitations. This provides greater performance and security than outdated proxy designs which reassemble contents using sockets bolted to traditional anti-virus programs and are plagued with inefficiencies and the overhead of memory thrashing leading to high latency, low performance and size limitations.
Cloud anti-virus	Using the built-in RFDPI engine, Dell SonicWALL can leverage the power of the cloud to provide the most comprehensive set of anti-malware signatures available, while minimizing latency or delay. The Dell SonicWALL Cloud Anti-Virus Service provides millions of additional malware signatures for inspection of executable files using the most up-to-date information available.
Bi-directional Inspection	RFDPI can be performed on both inbound and outbound connections to provide protection in all network traffic directions.
24x7 signature updates	SonicLabs Research Team team creates and updates signature databases that are propagated automatically to the firewalls in the field, with those signatures taking immediate effect without any reboot or service interruption required.

### Firewall and networking

Stateful packet inspection	All network traffic is inspected, analyzed and brought into compliance with firewall access policies.
DOS attack protection	SYN Flood protection provides defense against DOS attacks using both layer 3 SYN proxy and layer 2 SYN blacklisting technologies.
Flexible deployment	Can be deployed in traditional NAT and Layer 2 Bridge modes.
Policy-based routing	Create routes based on protocol to direct traffic to a preferred WAN connection with the ability to fail back to a secondary WAN in the event of an outage.
High availability	Supports Active/Passive failover to ensure increased reliability by protecting against hardware or software faults.
WAN load balancing	Load balance up to four WAN interfaces using Round Robin, Spillover or Percentage based methods.
WAN acceleration	WAN Acceleration decreases latency and increases transfer speeds between remote sites for even higher network efficiency gains.



## Features

VoIP		
Feature	Description	
Advanced QoS	Guarantee critical communications with 802.1p and DSCP tagging and remapping of VoIP traffic on the network.	
DPI of VoIP traffic	Predefined signatures detect and block VoIP specific threats.	
H.323 gatekeeper and SIP proxy support	Block spam calls by requiring that all incoming calls are authorized and authenticated by H.323 gatekeeper or SIP proxy.	
Management and monitoring		
Web GUI	An intuitive web-based interface allows quick and convenient configuration in addition to management through Dell SonicWALL Global Management System (GMS®), or the CLI.	
SNMP	SNMP provides the ability to protectively monitor and respond to threats and alerts.	
Netflow/IPFIX	Export an extended set of data through IPFIX or NetFlow protocols for granular insight into application traffic, bandwidth utilization and security threats in addition to powerful troubleshooting and forensics capabilities. Compatible with Dell SonicWALL Scrutinizer and third-party monitoring and reporting applications. (TZ 215 only)	
Centralized policy management	With Dell SonicWALL GMS, monitor, configure and report on multiple Dell SonicWALL appliances from a single intuitive interface and customize your security environment to suit your individual policies.	
Application intelligence and control		
Application control	Identify and control applications or individual components of an application based on RFDPI technology instead of relying on well-known ports and protocols.	
Application bandwidth management	Allocate bandwidth to critical applications while throttling unproductive application traffic for an efficient and productive network.	
Custom application identification	Create and configure custom application identification based on traffic parameters or on patterns unique to an application in its network communications.	
Application traffic analytics	Provides organizations with granular insight into application traffic, bandwidth utilization and security in addition to powerful troubleshooting and forensics capabilities. (TZ 215 only)	
Application signature database	A continuously expanding database of over 3,500 application signatures ensures that administrators are able to control the usage of all the latest applications on their network at a category or individual level.	
User activity tracking	User identification is seamlessly integrated with Microsoft® Active Directory and other authentication systems enabling tracking and reporting of individual user identification.	
GeoIP country traffic identification	Identify and control network traffic going to or coming from specific countries. (TZ 215 only)	
Firewall and networking		
<b>Firewall</b> <ul style="list-style-type: none"><li>• Reassembly-Free Deep Packet Inspection</li><li>• Stateful packet inspection</li><li>• DOS attack protection</li><li>• TCP reassembly</li><li>• Stealth mode</li></ul>	<ul style="list-style-type: none"><li>• Hyperlinked log messages</li><li>• Unified CFS and app control with bandwidth throttling</li></ul> <b>Anti-malware</b> <ul style="list-style-type: none"><li>• Stream-based malware scanning</li><li>• Gateway anti-virus</li><li>• Gateway anti-spyware</li><li>• Cloud Anti-Virus Service</li></ul> <b>VoIP</b> <ul style="list-style-type: none"><li>• Advanced QoS</li><li>• Bandwidth management</li><li>• DPI of VoIP traffic</li><li>• Full Interoperability</li><li>• H.323 gatekeeper and SIP proxy support</li></ul> <b>Networking</b> <ul style="list-style-type: none"><li>• Dynamic routing</li><li>• Policy-based routing</li><li>• Advanced NAT</li><li>• DHCP server</li><li>• Bandwidth management</li><li>• Link aggregation</li><li>• Port redundancy</li><li>• High availability</li></ul>	<ul style="list-style-type: none"><li>• IPv6 ready</li><li>• Load balancing</li></ul> <b>Management and monitoring</b> <ul style="list-style-type: none"><li>• Web GUI</li><li>• Command line interface</li><li>• SNMP</li><li>• Analyzer reporting</li><li>• Scrutinizer reporting</li><li>• GMS policy management and reporting</li><li>• Logging</li><li>• Netflow/IPFix</li><li>• App visualization</li><li>• Centralized policy management</li><li>• Single sign-on</li><li>• Terminal service/Citrix support</li></ul> <b>Security services</b> <ul style="list-style-type: none"><li>• Intrusion Prevention Service</li><li>• Gateway Anti-Malware Service</li><li>• Content Filtering Service</li><li>• Enforced Client Anti-Virus and Anti-Spyware Service – McAfee®</li><li>• Application Intelligence, Control and Visualization Service</li></ul>
<b>Application control</b> <ul style="list-style-type: none"><li>• Application control</li><li>• Application component blocking</li><li>• Application bandwidth management</li><li>• Custom application signature creation</li><li>• AppFlow visualization</li><li>• Data leakage prevention</li><li>• IPFIX with extensions reporting</li><li>• User activity tracking</li><li>• GeoIP country traffic identification</li><li>• Comprehensive application signature database</li></ul>		
<b>Intrusion prevention</b> <ul style="list-style-type: none"><li>• Signature-based scanning</li><li>• Automatic signature updates</li><li>• Outbound threat prevention</li><li>• IPS exclusion list</li></ul>		

# Specifications

Firewall	TZ 105 Series		TZ 205 Series		TZ 215 Series	
SonicOS version			SonicOS 5.8.1 and later			
Stateful throughput <sup>1</sup>	200 Mbps		500 Mbps		500 Mbps	
IPS throughput <sup>2</sup>	60 Mbps		80 Mbps		110 Mbps	
GAV throughput <sup>2</sup>	40 Mbps		60 Mbps		70 Mbps	
UTM throughput <sup>2</sup>	25 Mbps		40 Mbps		60 Mbps	
Maximum connections <sup>3</sup>	8,000		12,000		48,000	
Maximum UTM/DPI connections	8,000		12,000		32,000	
New connections/sec	1,000		1,500		1,800	
Nodes supported			Unrestricted			
Denial of service attack protection			22 classes of DoS, DDoS and scanning attacks			
SonicPoints supported	1		2		16	
VPN						
3DES/AES throughput <sup>4</sup>	75 Mbps		100 Mbps		130 Mbps	
Site-to-site VPN tunnels	5		10		20	
Bundled GVC licenses (maximum)	0 (5)		2 (10)		2 (25)	
Bundled SSL VPN licenses (maximum)	1 (5)		1 (10)		2 (10)	
Encryption/Authentication/DH Group			DES, 3DES, AES (128, 142, 256-bit), MD5, SHA-1/DH Group 1, 2, 5, 14			
Virtual assist bundled (maximum)	—		1 (30-day trial)		2 (30-day trial)	
Key exchange			IKE, Manual Key, Certificates (X.509), L2TP over IPSec			
Certificate support	Verisign, Thawte, Cybertrust, RSA Keon, Entrust and Microsoft CA for Dell SonicWALL-to-Dell SonicWALL VPN, SCEP					
VPN features	Dead Peer Detection, DHCP Over VPN, IPSec NAT Traversal, Redundant VPN Gateway, Route-based VPN					
Global VPN client platforms supported			Microsoft® Windows XP, Vista 32/64-bit, Windows 7 32/64-bit			
SSL VPN platforms	Microsoft Windows XP/Vista 32/64-bit/Windows 7, Mac OSX 10.4+, Linux FC3+/Ubuntu 7+/OpenSUSE					
Mobile Connect platform supported			Apple® iOS 4.2 or higher, Google® Android™ 4.0 or higher			
Security services						
Deep Packet Inspection services	Gateway Anti-Virus, Anti-Spyware, Intrusion Prevention, Application Intelligence and Control (TZ 215 only)					
Content Filtering Service (CFS)	HTTP URL, HTTPS IP, keyword and content scanning, ActiveX, Java Applet, and cookie blocking bandwidth management on filtering categories, allow/forbid lists					
Enforced Client Anti-Virus and Anti-Spyware			McAfee®			
Comprehensive Anti-Spam Service <sup>6</sup>			Supported			
Application Intelligence and Control	Application control				Application Traffic Visualization and Advanced Application Control	
Networking						
IP address assignment	Static, (DHCP, PPPoE, L2TP and PPTP client), Internal DHCP server, DHCP relay					
NAT modes	1:1, 1:many, many:1, many:many, flexible NAT (overlapping IPs), PAT, transparent mode					
VLANs	5, PortShield		10, PortShield		20, PortShield	
DHCP			Internal server, relay			
Routing			OSPF, RIP v1/v2, static routes, policy-based routing, multicast			
Authentication	XAUTH/RADIUS, Active Directory, SSO, LDAP, Novell, internal user database, Terminal Services, Citrix					
Local user database			150 users			
VoIP			Full H.323v1-5, SIP, gatekeeper support, outbound bandwidth management, VoIP over WLAN, deep inspection security, full interoperability with most VoIP gateway and communications devices			
System						
Zone security			Yes			
Schedules			Yes			
Object-based/group-based management			Yes			
DDNS			Dynamic DNS providers include: dyndns.org, yi.org, no-ip.com and changeip.com			
Management and monitoring	Local CLI, Web GUI (HTTP, HTTPS), SNMP v2; Global management with Dell SonicWALL GMS					
Logging and reporting			Analyzer, Scrutinizer, GMS, Local Log, Syslog, Solera Networks, NetFlow v5/v9 (TZ 215), IPFIX with Extensions (TZ 215), Real-time Visualization (TZ 215 only)			
Hardware failover	—		Active/Passive		Active/Passive	
Anti-spam	RBL support, Allowed/Blocked Lists, Optional Dell SonicWALL Comprehensive Anti-Spam Service <sup>6</sup>					
Load balancing			Yes, Outgoing and Incoming			
Standards	TCP/IP, UDP, ICMP, HTTP, HTTPS, IPSec, ISAKMP/IKE, SNMP, DHCP, PPPoE, L2TP, PPTP, RADIUS, IEEE 802.3					
WAN acceleration support <sup>7</sup>			Yes, with Dell SonicWALL WXA appliances			
Built-in wireless LAN						
Standards	802.11b/g/n		802.11a/b/g/n (3x3)		802.11a/b/g/n (3x3)	
Wireless security standards	(WEP, WPA, WPA2, 802.11i, TKIP, PSK, 02.1x, EAP-PEAP, EAP-TTLS)					
Virtual Access Points (VAPs)			Up to 8			
Antennas	Double: detachable, external		Triple: 2 external detachable, 1 internal		Triple: detachable, external	
Radio power—802.11b/802.11g/802.11n	18 dBm max/18 dBm @ 6Mbps, 15 dBm @ 54Mbps		15.5 dBm max/18 dBm max/17 dBm @ 6 Mbps, 13 dBm @ 54 Mbps		15.5 dBm max/18 dBm max/17 dBm @ 6 Mbps, 13 dBm @ 54 Mbps	
Radio power—802.11a/802.11b/802.11g/802.11n	—		15.5 dBm max/18 dBm max/17 dBm @ 6 Mbps, 13 dBm @ 54 Mbps		15.5 dBm max/18 dBm max/17 dBm @ 6 Mbps, 13 dBm @ 54 Mbps	
Radio power—802.11n (2.4GHz)/802.11n (5.0GHz)	19 dBm MCS 0, 12 dBm MCS 15		19 dBm MCS 0, 11 dBm MCS 15/17 dBm MCS 0, 12 dBm MCS 15		19 dBm MCS 0, 11 dBm MCS 15/17 dBm MCS 0, 12 dBm MCS 15	
Radio receive sensitivity—802.11a/802.11b/802.11g	-90 dBm @ 11Mbps/-91 dBm @ 6 Mbps, -74 dBm @54 Mbps		-95 dBm MCS 0, -81 dBm MCS 15/-90 dBm @ 11Mbps/-91 dBm @ 6Mbps, -74 dBm @ 54 Mbps		-95 dBm MCS 0, -81 dBm MCS 15/-90 dBm @ 11Mbps/-91 dBm @ 6Mbps, -74 dBm @ 54 Mbps	
Radio receive sensitivity—802.11n (2.4GHz)/802.11n (5.0GHz)	-89 dBm MCS 0, -70 dBm MCS 15		-89 dBm MCS 0, -70 dBm MCS 15/-95 dBm MCS 0, -76 dBm MCS 15		-89 dBm MCS 0, -70 dBm MCS 15/-95 dBm MCS 0, -76 dBm MCS 15	
Hardware built-in wireless LAN						
Interfaces	(5) 10/100 fast ethernet, 1 USB, 1 console		(5) 10/100/1000 copper gigabit, 1 USB, 1 console		(7) 10/100/1000 copper gigabit, 2 USB, 1 console	
Processor	Single-core		Dual-core		Dual-core	
Flash memory/RAM	32 MB/256 MB		32 MB/256 MB		32 MB/512 MB	
3G wireless/modem <sup>5</sup>			Supported with approved adapters <sup>5</sup>			
USB ports	1		1		2	
Power input			100 to 240 VAC, 50-60 Hz, 1 A			
Max power consumption	5.2W/7.0W		6.4W/10.5W		9.0W/12.0W	
Total heat dissipation	17.8 BTU/23.7 BTU		21.9 BTU/35.8 BTU		30.6 BTU/41.4 BTU	
Certifications			VPNC, ICSA Firewall 4.1			
Certifications pending			EAL4+, FIPS 140-2 Level 2, IPv6 Phase 1, IPv6 Phase 2			
Form factor and dimensions	5.555 x 1.42 x 7.48 in (14.1 x 3.6 x 19 cm)		5.555 x 1.42 x 7.48 in (14.1 x 3.6 x 19 cm)		7.125 x 1.5 x 10.5 in (18.1 x 3.81 x 26.67 cm)	
Weight	0.75 lbs/0.34 kg 0.84 lbs/0.38 kg		0.75 lbs/0.34 kg 0.84 lbs/0.38 kg		1.95 lbs/0.97 kg 2.15 lbs/0.97 kg	
Major regulatory compliance			FCC Class A, CES Class A, CE, C-Tick, VCCI, Compliance MIC, NOM, UL, cUL, TUV/GS, CB, NOM, WEEE, RoHS			
Environment/humidity			40-105° F, 0-40° C/ 5-95% non-condensing			
MTBF			28 years/15 years			

<sup>1</sup>Testing Methodologies: Maximum performance based on RFC 2544 (for firewall). Actual performance may vary depending on network conditions and activated services. <sup>2</sup>UTM/Gateway AV/Anti-Spyware/IPS throughput measured using industry standard Spirent WebAvalanche HTTP performance test and iix test tools. Testing done with multiple flows through multiple port pairs. <sup>3</sup>Actual maximum connection counts are lower when DPI services are enabled. <sup>4</sup>VPN throughput measured using UDP traffic at 1280 byte packet size adhering to RFC 2544. <sup>5</sup>3G card and modem are not included. See <http://www.sonicwall.com/us/products/cardsupport.html> for supported USB devices. <sup>6</sup>The Comprehensive Anti-Spam Service supports an unrestricted number of users but is recommended for 250 users or less. <sup>7</sup>With Dell SonicWALL WXA Series Appliances.



Security Monitoring Services from Dell SecureWorks are available for this appliance Series. For more information, visit [www.dell.com/secureworks](http://www.dell.com/secureworks)